



TRIKO Valley News

Volume 13 , Issue 3 - May 2013

From Our President...



Steve Proffitt
Thelen Associates, Inc.

As Summer approaches and the construction season is back in full swing, another successful ASHE season is coming to an end. The opportunity to serve as the President of the TRIKO Valley Section has been very rewarding to me both personally and professionally. It's been a wonderful experience over the past year to be part of a great organization and to be given the opportunity to work with many high caliber people. I would like to thank our Board Members for their hard work, time and effort and creative ideas for making our section one that our members can be proud of.

We have two exciting upcoming events that are both great opportunities to interact with fellow ASHE members. On Tuesday, June 4th we have a joint venture event with ASHE, OCA and ASCE for the 7:10 pm Reds -vs- Colorado game. The deadline to purchase tickets is May 20th. Also on Thursday, June 13th we have our ASHE - Lloyd Wallace Memorial golf outing over at Walden Ponds golf course with a 11:15 shotgun start. Please sign up for your foursome soon. Our golf outing raises money for our annual scholarship fund.

I would like to thank two individuals who will no longer be on the Board after this year who have made many positive contributions to our local section over the years and will be greatly missed. First, Paul Schoelwer did a great job last year as President and has been very helpful to me over the past year with his knowledge and leadership capabilities. Last, Carol Callan-Ramler has done an excellent job over the past few years with getting new members signed up with ASHE and leading the charge of our Membership Drive. Her hard work and creative ideas have helped our enrollment grow since she's been on the Board. These two individuals will be missed next year but their significant contributions will be forever remembered.

Mr. Matt Loeffler will be the incoming ASHE President for the 2013-2014 calendar year. Matt has done an excellent job over the past few years with our website, Wild Apricot and our Google Merchant account. He will bring great leadership, new ideas and will help grow our local section.

In closing, I want to encourage all members to voice their opinions and ideas to help our section become better and move forward. Please contact your local legislators and ask them to find new and more creative ways to increase funding for local roadway and bridge projects. Thanks again for supporting me as your President and I am grateful for the opportunity. Have a safe and enjoyable Summer and I look forward to seeing you all at our next program on May 21st at the Montgomery Inn Boathouse with a presentation from Steve Mary of ODOT District #8 on the Brent Spence Bridge.

inside

*March Meeting
Minutes*

ASHE PIN Report

*Member Project
Spotlight*

*Golf Outing
Information*

*Membership
Roster*



ASHE - TRIKO Valley Section
P.O. Box 257
Mason, OH 45040
www.ashe-trikovalley.com

The mission of the American Society of Highway Engineers is to provide a forum for members and partners of the highway industry that supports education, innovation, and fellowship; promoting a safe and efficient highway system for mobility now and in the future.

ASHE-TRIKO Valley General Membership Meeting Minutes

March 19, 2013 - Montgomery Inn Boathouse

President Steven Proffitt called the meeting to order with the Pledge of Allegiance at 11:30. Four guests including Don Gindling, City of Cincinnati Engineer, and three students were introduced.

The committee reports were given next as follows:
Treasurer Eric Kistner presented the finance report. Eric asked members to pay in advance to aid the board in making meeting arrangements.

President Proffitt presented the Secretary Report. He stated the reports for the board and general membership would be available at the TRIKO Valley website.

Caroline Duffy presented the PIN report, noting that President Obama unveiled his plan for the nation's infrastructure in the State of the Union address. His plan focuses on three areas:

- A "fix it first" policy that calls for investing \$50 billion in transportation infrastructure
- Drawing on private investment and the revival of a National Infrastructure Bank.
- Elimination of red tape in permits and review for infrastructure projects.

The issue on the mind of Congress is the budget, with the House slashing \$117 million in transportation funding from the MAP-21 authorization and a subsequent Senate amendment maintaining the funding levels dictated by MAP-21.

The states are taking their own paths to find funding. Governor Kasich's transportation bill includes a \$1.5 billion infusion of revenue from the sale of Ohio Turnpike Bonds. The Brent Spence Bridge and ability to toll in Kentucky remains up in the air. Without tolls, it will likely take twenty years to fund the Brent Spence Bridge. Tolling and other non-resolved issues in this session have lead to speculation that Governor Beshear will call a special session this summer to address these issues.

Caroline asked the membership to contact their legislative representatives to urge for passage of funding at the federal and state level.

A region report was not given.

John Davidson gave the Scholarship Report. The scholarship applications are due on May 6, 2013. John urged all companies to have their co-ops apply.

President Proffitt gave the Membership Report. The membership drive is ongoing and awards will be given out at the next meeting on May 21, 2013.

President Steve Proffitt gave the Golf Outing Report. The outing is going to be played on June 13, 2013 at Walden Pond.

Eric Beck and Dennis Brunton organized the Schramm awards this year. Based on membership voting, the following projects will receive awards.

Over \$3 million: SR 4 Bypass Widening Project (winner by one vote)
Owner: City of Fairfield
Designer: LJB
Constructor: Sunesis Construction

Under \$3 million: Camden College Corner Road Covered Bridge Replacement
Owner: Preble County Engineer
Designer: Palmer and Smolen
Constructor: Brunbaugh Construction

The National Covered Bridge Conference will be held in June, 2013, in Dayton, Ohio. Please see Woodcenter.org for more details.

The next ASHE TRIKO Valley section meeting will be held on May 21. The topic will be the Brent Spence Value for Money Analyses. ODOT District 8 Deputy Director Steve Mary will be our featured speaker. A possible co-sponsored summer event with OCA is being planned. Stay tuned for more information.

The program progressed with the Capital Improvement Program. The following agencies presented:

1. Butler County Engineers Office
2. Montgomery County Engineers Office
3. Hamilton County Engineers Office
4. Clermont County Engineers Office
5. Ohio Department of Transportation
6. Warren County Engineers Office
7. Kentucky Transportation Cabinet
8. City of Cincinnati

President Steve Proffitt announced that the ASHE Central Ohio section will be hosting a half-day seminar on P3. President Proffitt mentioned the project highlight section added this year to the TRIKO Valley newsletter after which he adjourned the meeting at 1:13 pm. The motion was second by Cindy Wallace.

Respectfully Submitted:
David Emerick
TRIKO Valley Section Secretary

Congratulations to this Year's Schramm Award Winners



ASHE PIN (Political Information Network) Report

May 2012

In our last ASHE PIN report before the summer, the issue that has and continues to be at the top of the Highway Trust Fund is the lack of a long-term funding stream that will sustain the Highway Trust Fund into the future. Many funding options have been explored, from raising the gasoline user’s fee to implementing a vehicles travel user’s fee to a national sales tax. The problem is that our Congressional representatives in both the House and the Senate have both failed to exhibit the will needed to vote to establish a long-term funding stream that will sustain the Highway Trust Fund into the future. The ASHE National Legislative PIN committee has been exploring how to leverage the strengths of the ASHE National organization in this decisive issue.

We explored last year attending large legislative functions in Washington DC with the objective to network with other attending organizations and to make the name of ASHE known in those circles. The ASHE contingent that returned reported that while the functions were interesting, that they did not believe that ASHE’s mission would be fulfilled in this manner. The strength of ASHE has always been at the grass-roots level, in the section. With over 6500 members nationwide, the ASHE section is where national will focus.

A number of sections have a legislative committee leader, or an ASHE PIN. We urge all sections to nominate a person to this position, if they already do not have an ASHE PIN. This person is part of an ASHE email network that receives daily legislative email updates from National ASHE PIN member and former National President, Calvin Leggett. The section ASHE PIN then should pass this information along to each individual section during the regularly scheduled meetings. In addition to the legislative email updates, these section PIN’s will now be the recipient of 7-10 articles explaining the Highway Trust Fund. Retired Montgomery County, Ohio County Engineer, Joe Litvin, has agreed to become an ASHE Ambassador. He will assist the National Legislative Committee by penning 7-10 articles and developing canned presentations for use at ASHE section meetings.

The PIN’s will also ask members of the sections to use these articles as letters to the editors in the various neighborhood newspapers that cover the section’s jurisdiction. In addition, these presentations will be available on the ASHE National website for ASHE members to use in presentation at Rotary, church, and other social clubs where the general public can be educated. Any ASHE section member that contributes articles on the Funding of the Highway Trust Fund will be published on the National website as well after review by the national ASHE Legislative committee.

Our goal with ASHE is to make some noise with the general public about why Funding of the Highway Trust Fund is important. We want ASHE members, along with the general public, to both council the Congressional representatives on the why the solvency issue with the Highway Trust Fund needs to be addressed before the it runs off the bankruptcy fiscal cliff in March 2014. We urge each of you to prepare now on how you can utilize these forthcoming articles and presentations to get the word out to the general public, and Congress, about this critical issue.

2012 - 2013 Board of Directors

Title	Member	Company	Phone	Email
President	Steve Proffitt	Thelen Associates, Inc.	513-825-4350	sproffitt@thelenassoc.com
1st Vice President	Matt Loeffler	Butler Co. Engineers Office	513-785-4109	loefflerm@bceo.org
2nd Vice President	Carol Callan-Ramler	KY Transportation Cabinet	859-341-2700	carol.callan-ramler@ky.gov
Treasurer	Eric Kistner	Stantec	513-842-8200	ekistner@stantec.com
Secretary	David Emerick	Duke Energy	513-287-1001	david.emerick@duke-energy.com
Regional Rep.	Stan Harris	Stantec	513-842-8200	sharris@stantec.com
Past President	Paul Schoelwer	Thaman	513-631-4303	pschoelwer@gmail.com
3rd Year Director	Nathan Moore	Kleingers and Associates	513-779-7851	nathan.moore@kleingers.com
2nd Year Director	Eric Beck	Hamilton Co. Engineers Office	513-946-8430	eric.beck@hamilton-co.org
2nd Year Director	Dennis Brunton	Barrett Paving Materials	513-271-6200	dbrunton@barrett paving.com
1st Year Director	Vanessa Fritsch	URS	513-419-3451	vanessa.fritsch@urs.com

Proposed Slate of 2013 - 2014 Board of Directors Candidates

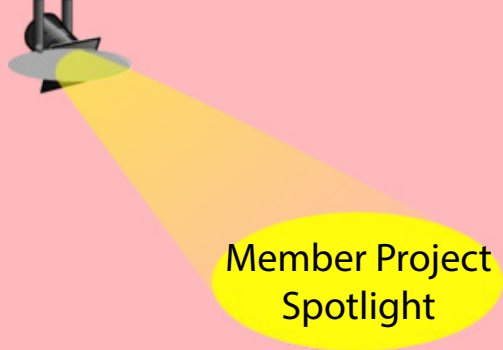
Title	Member	Company
President	Matt Loeffler	Butler Co. Engineers Office
1st Vice President	Dennis Brunton	Barrett Paving Materials
2nd Vice President	Eric Beck	Hamilton Co. Engineers Office
Treasurer	Eric Kistner	Stantec
Secretary	David Emerick	Duke Energy
Regional Rep.	Stan Harris	Stantec
Past President	Steve Proffitt	Thelen Associates, Inc.
3rd Year Director	Nathan Moore	Kleingers and Associates
2nd Year Director	Vanessa Fritsch	URS
1st Year Director	Tom Nicholson	PRETEK Group
1st Year Director	Steve Mary	Ohio Department of Transportation

Please Join Us...

Cincinnati Reds Outing
June 4, 2013

Deadline to purchase tickets is May 20.





Member Project Spotlight

Cleves Warsaw Road Bridge Replacement

The Hamilton County Engineer's Office is in the process of replacing the current 244 foot single span steel truss which was built in 1923 crossing the Muddy Creek located in Green and Delhi Townships of Hamilton County. The existing structure is camelback through truss which was constructed by the Brackett Construction Company of Cincinnati.

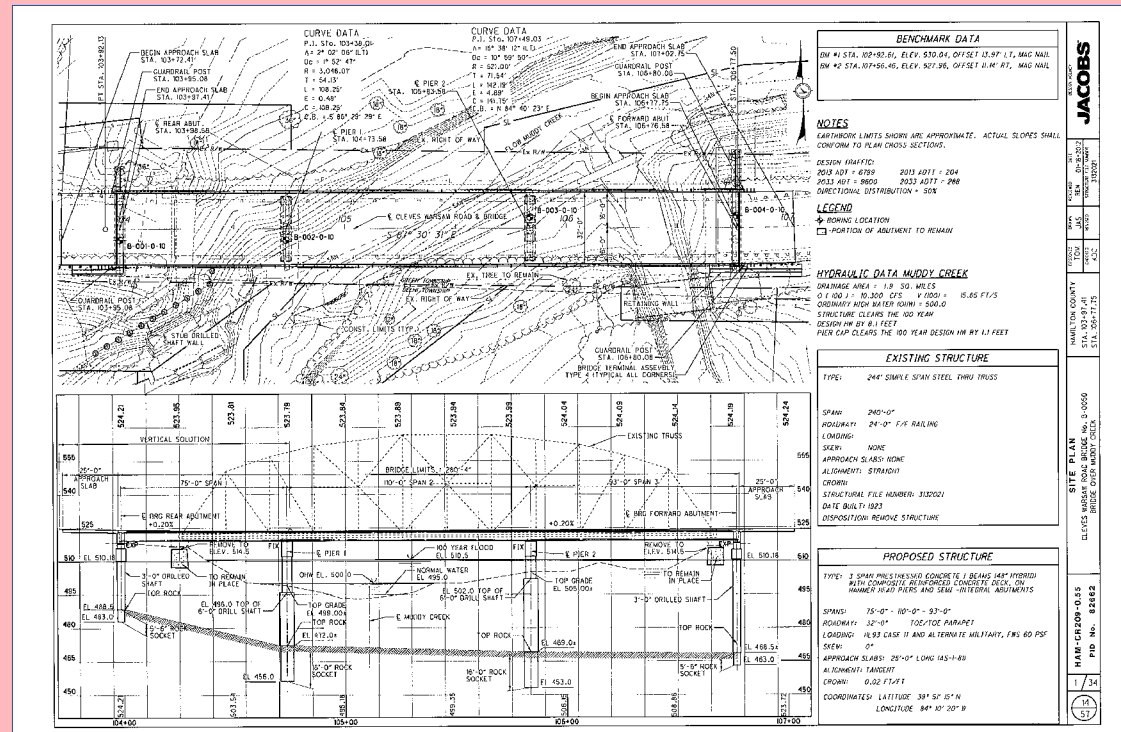
Camelback and Parker trusses have a distinctive sloping top chord but

share the vertical structural members of the Pratt Truss design patented in 1844 by Thomas and Caleb Pratt of Boston. The sloping design of the Camelback and Parker Truss variation used fewer materials which made them a cost-effective choice for spans longer than 200 feet. The bridge was determined eligible for inclusion on the National Register of Historic Places for Technological Significance in 2008 by the Ohio Department of Transportation and State Historic Preservation Office as one of the last representative examples of Camelback through Trusses in the State of Ohio.

The Hamilton County Engineer's Office was able to obtain funding available of the state-administered County Engineer's Association of Ohio (CEAO) LBR bridge funds from the Federal Highway Administration and State Funds from the Ohio Public Works Commission. A design agreement was entered into with Jacobs Engineering Group to develop design options and a set of construction plans. Jacobs, along with their sub-consultants, ASC Group Inc., and Berding Surveying, developed the three span design. District Eight engineers and staff at the Ohio Department of Transportation assisted the Hamilton County Engineer's Office navigate the planning and development process to bring the project from its concept stages to the bidding point.

The new structure which replaces this structurally deficient, functionally obsolete, 20 ton load limited bridge will be a three span (75' 0" – 110' – 0" – 93' 0"), modified prestressed concrete I-beam (48" hybrid) with composite reinforced concrete deck (8-1/2" slab, 11" over the beams), on concrete hammerhead piers and semi-integral concrete abutment. Thirty six inch diameter reinforced concrete drilled shaft abutment foundations and two seventy eight inch diameter reinforced concrete drilled shaft pier foundations, which were designed based on Terracon geotechnical borings and report, will support the new bridge. The new structure will handle HL93 Case II and alternate military loading, and provide for a 32'-0" width from the face of the new 44" high steel bridge railing that meets the TL3 crash criteria.

Utility relocation has been in progress for the past year and is currently being wrapped up.



Advertising Opportunities!

\$50 per year for Small Ad
\$150 per year for Large Ad and
Corporate Link on TRIKO Website

Contact Stan Harris at stan.harris@stantec.com.

Website logos to Matt Loeffler at loefflerm@bceo.org.

Reliable.
Resourceful
Responsive

More than 100 Offices Nationwide
(513) 321 5816 terracon.com

Terracon

Geotechnical ■ Environmental ■ Construction Materials ■ Facilities

Membership Drive Results Since Beginning of 2013:

New Member (Sponsoring Member)

Will Conkin (Vanessa Fritsch)

Mike Lorenz (Vanessa Fritsch)

Matt Gerken (Jeff Glowka)

Rich Engle (Matt Loeffler)

Josh Carter (N/A)

2013 ASHE TRIKO Valley Section Lloyd Wallace Memorial Golf Outing

The TRIKO Valley Section of ASHE will have its annual golf outing on **Thursday June 13th, 2013**, at **Walden Ponds Golf Course**. Our annual outing is named after Lloyd Wallace (former ODOT District 8 Deputy Director) in tribute to his contributions to the highway engineering field. The outing will be a Scramble format with registration between 10:00 am and 11:15 am, **Shotgun Start at 11:30 am**.

We would like to extend an invitation to you and your firm to join us at the golf outing. The registration fee per golfer is \$90. This fee includes golf at an excellent golf course, box lunch with soft drinks, Steak and Chicken dinner following golf, door prizes, and the chance to win the major door prize.

This outing is our sole means of raising money for the **ASHE TRIKO Valley Section Annual Scholarship Program** which provides yearly scholarships to Juniors in college entering their final year in transportation or construction programs. A donation of \$125 would give your firm a sponsorship at the golf outing with your firm’s logo or name placed on a sign at the tee box as well as being recognized in the outing handouts. Another method of advertising for you firm is to provide a “Door Prize” (e.g. box of golf balls, golf glove, divot repair tools, etc). This is a great opportunity to market your firm as approximately 100 transportation and construction industry personnel will be participating, from consultants and contractors to clients and owners.

Please see registration and sponsorship information on the next page. Registration is also available online at <http://ashetrikovalley.shuttlepod.org/>. If you have any questions please do not hesitate to contact me at 513-864-8617 or at brad.ackel@kzf.com.

THANK YOU FOR YOUR SUPPORT!

Sincerely,

Brad Ackel
Golf Committee Chairman

2013 LLOYD WALLACE MEMORIAL GOLF OUTING

Thursday June 13th, 2013
Walden Ponds Golf Course
6090 Golf Club Lane
Hamilton, Ohio 45011
(513) 785-2999

ITINERARY

10:00 am to 11:15 am	Registration and Lunch
11:15 am	Announcements
11:30 am	Shotgun Start
5:30 pm (or following golf)	Dinner and Prize Presentation

Cost per Golfer: \$90
Dinner Only: \$30

- A Box Lunch will be provided on your cart at registration. Lunch will include lunch meat hoagie, potato chips, piece of fruit, dessert and soft drink. During golf a cash beer & snack cart will be on the course. Dinner will be served immediately after golf. Dinner will include steak, grilled chicken, salad, mixed vegetables, baked potato, dinner rolls, brownies and soft drinks.
- Please consider a hole sponsorship for \$125. This donation will go toward the ASHE TRIKO Valley Section Annual Scholarship Program. A sign with your firm’s logo or name will be placed at one of the 18 tee boxes, and your firm will be recognized in the outing handouts.
- Prizes will be awarded to 1st and 2nd place teams as well as a “prize” for the last place team. Prizes will include long drive, closest to the pin, and long putt. There will be chances to win door prizes and everyone registering for the outing will have a chance to win the major door prize.
- Registration Deadline is Monday June 10th. Payment can be made by mail, online at <http://ashetrikovalley.shuttlepod.org/> or the day of at the sign-in table.**
- Any questions please contact Brad Ackel at 513-864-8617 or brad.ackel@kzf.com

You can register online at <http://ashetrikovalley.shuttlepod.org/>

or

Send a copy of this form and check, payable to ASHE TRIKO Valley, to:
KZF Design
700 Broadway St.
Cincinnati, Ohio 45202
Attn: Brad Ackel

Golfer’s Name	Company	Dinner Only
1.		
2.		
3.		
4.		

Sponsors/Donations:

Check for Hole Sponsor for \$125 _____
Name for sign at tee box an in outing handout _____
(Supply Logo in electronic format via email to brad.ackel@kzf.com)
Door Prize Donation _____

Your contact information:

Contact person: _____
Phone Number: _____
Email address: _____



THELEN ASSOCIATES, INC.
Geotechnical • Testing Engineers

1780 Carillon Boulevard
Cincinnati, Ohio 45240
Phone: 513-825-4350 Fax: 513-825-4756

www.thelenassoc.com

Erlanger, KY • Lexington, KY • Cincinnati, OH • Dayton, OH

- Geotechnical Engineers
- Soil & Foundation Consultants
- Special Inspections
- Drilling Services
- Construction Materials Testing, including:
 - Soils
 - Concrete
 - Asphalt
 - Steel
 - Fireproofing
 - Roofing



KLEINGERS & ASSOCIATES
civil engineering | land surveying | landscape architecture


6305 Centre Park Drive, West Chester, Ohio 45069
www.kleingers.com (513) 779-7851



Infrastructure Design

Matt Johnson, PE
Suite B
1549 Boettler Road
Uniontown, OH 44685
330-896-8860

Bronson Funke, PE
Suite 200, Cornell Center
11311 Cornell Park Drive
Cincinnati, OH 45242
513-469-1600

 www.palmer.net

Geotechnical - Civil - Environmental
Materials Testing - Transportation - Diving
Construction Monitoring - Water Resources
Wastewater - Surveying - GIS Applications



Stantec

Regional Offices

Cincinnati
Columbus
Toledo
Lexington
Louisville
Jeffersonville
St. Louis
Nashville



stantec.com



Berding Surveying
GPS Surveying • 3D Laser Scanning

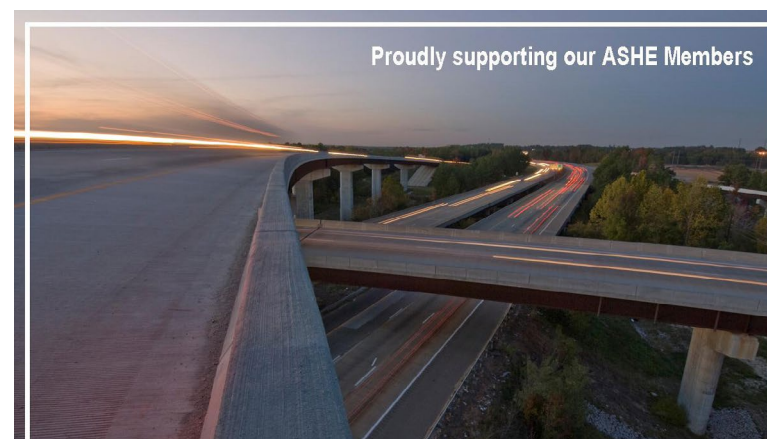
www.berdingsurveying.com



Flexible Pavements of Ohio

1-888-4HOTMIX
www.flexiblepavements.org

An association for the development, improvement and advancement of quality asphalt pavement construction in Ohio



Proudly supporting our ASHE Members

www.smeinc.com



S&ME
ENGINEERING INTEGRITY.

Geotechnical Engineering • Environmental Services
Construction Materials Engineering & Testing
Occupational Health & Safety
Water Resources & Solid Waste Engineering
Natural Resources & Cultural Resources

26 locations to serve you.
AL • FL • GA • KY • NC
OH • SC • TN • VA

Cincinnati Office:
11699 Chesterdale Road
Cincinnati, OH 45246
513-771-8471
dfurgason@smeinc.com

ASHE TRIKO VALLEY MEETING

General Membership Meeting

Tuesday, May 21, 2013

The Montgomery Inn Boathouse, 11:30 am

Brent Spence Bridge Update
Steve Mary, ODOT District 8 Deputy Director

Cost per person: \$25.00
Visit website (www.ashe-trikovalley.com)
and click on Meeting Link to register and pay online





TranSystems' staff of over 1,000 professionals, with more than 80 in Ohio, offers a wide array of services, including:

Roadway/Geometrics Planning & Design | Structural Investigations, Analysis & Design | Corridor Planning
Traffic Studies & Design | NEPA Studies
Environmental Documents | Environmental Investigations
Bikeway Planning & Design | Public Involvement
Railroad Planning & Design | Right-of-Way Acquisition

Cincinnati Office
(513) 621-1981

Columbus Office
(614) 433-7800

Cleveland Office
(216) 861-1780

Youngstown Office
(330) 757-7900

General Membership

Jamal Adhami
Richard Bailey*
Eric Beck
Gerard Berding
Bryan Bender
Steve Bergman
Gabriel Bitar
Jim Brannon
Benjamin Brandstetter
Tom Brayshaw
William Brayshaw
John Brazina
Wayne Breitenstein
Jonathon Brunot
Michael Bryson
Dennis Brunton
Stephen Butler
Carol Callan-Ramler
Tammy Campbell
Timothy Casto
Jim Collins*
John Davidson
Scott Dearnell
Lori Dearnell
Scott Dearnell
Katie Dillenburger
Mark Dole
Caroline Duffy*
Michael Eddy
Kristin Eggeman
Mary Elfers*
David Emerick
Joseph Espelage
Jeremy Evans
William Fair

Daniel Furgason
Dan Ficker
Vanessa Fritsch
Bronson Funke
Timothy Gilday
Jeff Glowka
Paul Goodhue
Paul Gruner
Richard Guidi
Corrin Gulick
Stan Harris
Steven Hartke
John Heilman
Jeffrey Heimann
Mark Henderson
Robert Hoffman
Kelly Hollatz
Ted Hubbard*
Brad Hyre
Warren Iulg
Dennis Jennings
Tracy M. Jones
James Jurgensen*
Jim Jurgensen Sr.*
Ross Kendall
John Kerr
Eric Kistner
Scott Knebel
Jeffrey Koehn
Steven Korte
Wess Kroll
Jennifer Kunz
John Lachmann
Jeffrey Lamb
Maria Lapman

William Lawall, III
Michael Lenett
Aaron Littman
Hao Liu
Matt Loeffler
Patrick Manger
Benjamin Mann
Steve Mary
Shawn Mason
Dan McAdams
Stephen Miles
Douglas Miller
Richard Miller
Joseph Moeller
Nathan Moore
Bryan Mount
Michael Murray
Jeff Newby
David Newhouse
Ralph Norman
Christian Nyberg
David Orr
Jack Pflum
Duane Phelps
Penny Pike
Daniel Prevost
Dale Proffitt
Steve Proffitt
Michael Prus
Joseph Prus
David Quimby
Jason Ramler
Brian Rhodes
Mark Richardson
Ronald Roberts

Ali Saleh
Paul Schoelwer*
Dale Schwieterman
Steven Shadix
William Shefcik
Kar Singh
Casey Smith
Stefan Spinosa
David Spisak
Phillip Stegman
Robert Steier
Craig Stephenson
Jacob Stremmel
Michael Sturdevant
Dwight Stutz
Cindy Taylor
Michelle Terrell
Mike Thompson*
David Tomley
Robert Trenkamp
Daniel Unger
Greg Urasek
Joseph Vogel*
Cindy Wallace
Jeffrey Wallace
George Webb
Greg Wilkens*
Edward Williams
Robert Yeager
Steven Young
Heinrich Zehetmaier*

* Past Presidents

